

Annual Report of Kumamoto Relief Mission

As of 28 April, 2017



Construction of all 4,303 temporary housing units for the victims of the 2016 Kumamoto earthquakes was completed last November. While the restoration of lifeline facilities and roads are now well underway, reconstruction efforts still have a long way to go. Peace Winds Japan (PWJ) has been working on the disaster relief mission in Mashiki town, supported by individual donations, government grants, and in-kind and monetary contributions from its corporate supporters.

Emergency Phase

DAY1-3 Search and Rescue

Immediately after powerful earthquakes struck Kumamoto in April 2016, PWJ dispatched its rescue team and search-and-rescue dogs to save victims. They searched for missing people in the stricken areas of Mashiki town and Minamiaso village in collaboration with firefighters, police, and Ground Self-Defense Force personnel.



Search and rescue operation

DAY4-6 Balloon Shelters

In the Mashiki Town Athletic Park, PWJ built two "balloon shelters," large inflatable tents, each of which had enough space to accommodate 50 people at one time. They were used especially for female evacuees and evacuees with pets who tended to shy away from moving into evacuation centers.



Women-only/pet-friendly balloon shelters

Relief goods for evacuees

- Clothes
- Sweet summer oranges
- Urethane mattresses
- Tarpaulins
- Chocolates
- Instant coffee sticks
- Pet goods
- Mineral water
- Nutritional supplements
- Bedclothes
- Sanitary goods etc.



Temporary lavatories and shower room for evacuation centers

- 12 temporary Western-style lavatories for women and handicapped persons
- Temporary shower room



Evacuation Camps

DAY7-88 Tent Camps

PWJ set up two pet-friendly evacuation tent camps in Mashiki town and accepted 277 evacuees and their 91 pets. On the premises, PWJ also provided a common gathering-place, shower rooms, washing machines, temporary lavatories in order to improve living environment. In addition, PWJ opened a dogs and cats daycare center along with a dog run for the pet owners who are at work during the daytime.

DAY52-170 Unit House Camp

Due to increasing concerns about heatstroke caused by the summer heat, PWJ set up a unit house camp consisting of 80 prefabricated houses and 6 trailer houses as an alternative to the tent camps. Each room was about 10 square meters big and had air conditioning and refrigerator. The camp's facilities included a common room, a study room, 4 shower rooms, a laundry, 15 temporary lavatories, 2 washstands, a common kitchen, a daycare center for pets, a dog run, and a health counseling room of pharmacists. The unit house camp supported 144 people from 57 families and 64 animals.



Evacuation tent camp in Saishunkan Hilltop



Temporary café



Emergency tent



Unit house camp



Trailer house

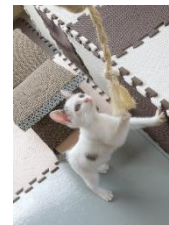
Health Care for Evacuees

- Health counseling by doctors and health nurses
- Distribution of vegetable dish and care foods
- Provision of medical and health information



Pet Care

- Daycare center for dogs and cats
- Dog run and swimming pool for dogs
- Health management for pets by pet care specialized staff
- Distribution of pet foods and goods



Relief Supplies for Temporary Housing Residents

DAY147-231 Distribution of Home Electrical Appliances

As the residents of the temporary housing are forced to live an inconvenient life, PWJ donated home electrical appliances to all 1,650 households living in temporary housing units in Mashiki town and Nishihara village. Each family chose one from vacuum cleaner, television, air cleaner and electric carpet for which there was a strong need according to PWJ's own research. Furthermore, PWJ installed 38 outdoor security lights in 7 temporary housing complexes to ensure residents' safety, as there was a growing demand for sufficient lighting at night.



Resident using vacuum cleaner



Room equipped with electric carpet



Security light installed in the temporary housing complex

Management Support for Residents' Associations

Current Program

PWJ has been providing support to board members of the temporary housing residents' associations in Mashiki town. In order for them to acquire knowledge and skills necessary for community management, PWJ has started a one-year capacity building and training program. At regular meetings, it provides a forum for discussion and information sharing to learn from beset practices in association with guest lecturers. The program also includes a study tour to other disaster-affected areas, offering participants the opportunity to have site visits and dialogue with local community residents.

The first meeting of the residents' associations was held in February 2017, which led to the establishment of a new information-sharing network for the first time in Mashiki town.

In April, PWJ organized a seminar aiming to learn lessons from the experience in Tohoku. A chair of the residents' association in Rikuzentakata, Iwate Prefecture delivered a presentation and had a discussion with participants. The presentation focused especially on how to prevent "solitary death" from occurring because a man who had been living alone in temporary housing was recently found dead in Mashiki town.

PWJ also supports the formation of communities by encouraging interaction amongst residents in various events. The Doll Festivals which celebrate the healthy development of female children were held in two temporary housing complexes in March and were partly sponsored by PWJ.



Chairpersons of residents' associations



Temporary housing units in Mashiki town



The Doll Festival (*Hinamatsuri*), the custom of displaying the hina dolls wearing brightly colored, traditional Japanese attire

SUMMARY OF THE RELIEF MISSION

- 3-day search and rescue operation in Mashiki town and Minamiaso village
- Balloon Shelters: **40** households, **152** people, **54** pets
- Two Tent Camps with **84** tents: **76** households, **277** people, **91** pets
- Unit House Camp with **80** prefabricated houses, **6** trailer houses, **1** camping car: **57** households, **144** people, **64** pets
- Facilities: **23** temporary lavatories, **6** shower rooms, **6** washing machines, Daycare center for pets, dog run, common gathering-place, common kitchen, study room, counseling room
- Events: **3** children's events, **27** warm meal services, **7** hand/foot massage services, **2** summer festivals, **3** concerts
- Distribution of Home Electrical Appliances: **1,650** households
- Installation of Outdoor Security Lighting: **38** lights, **7** temporary housing complexes
- Support for Residents' Associations: one-year capacity building and training program

Thank you for your kind support!

Our relief activities are supported by your donation, funds, and supplies.